

NICOR[®] HAZOC



NICOR Hazardous Location Series
High Efficiency Industrial Lighting



NICOR’s rugged and durable LED hazardous location fixtures provide years of reliable, maintenance-free operation in environments where flammable vapors or combustible dusts are present. Our linear, flood, and area lights deliver uniform light distribution greater than 126 lumens per watt and have a CRI of 70+ in two CCTs, 4000K and 5000K.

To ensure performance and safety at your facility, each of NICOR’s hazloc luminaires is protected against fluctuating power supplies and high exposure conditions with a 10kA Philips SP1 surge protector. Fixtures can install at altitudes as high as 6,560 feet and have a variety of mounting options available to meet your site requirements.

With higher efficacy and lower wattage than existing metal halide or high pressure sodium lights, NICOR’s hazloc series are ideal retrofit fixtures that offer greater energy savings, lower maintenance costs, longer life, and shorter paybacks. Our high performance luminaires are also regularly stocked and available to meet your ongoing project demands.

For more details and information, including the latest hazardous location product offerings, visit NICORHazloc.com.

FEATURE LISTING AND RATINGS

NICOR designs unique features into our lighting fixtures that make them more efficient, easier to install, and superior to similar products so they out-perform our competition.

The following guide defines these features to help you choose the right fixture for your application.



UL LISTED
UL is a world leader in product safety testing and certification. For more than 100 years, manufacturers have had their merchandise evaluated and tested for safety risks by an independent, third-party safety certification organization. Last year alone, approximately 14 billion products with the UL Mark entered the global marketplace. More information can be found at www.ul.com.



5 YEAR WARRANTY
NICOR Inc. warrants that all NICOR LED branded Solid State Lighting products made by NICOR to be free from defects in material and workmanship under normal consumer usage for a period of 5 years from date of purchase. For complete warranty information please visit nicorlighting.com.



UL Marine Listed
UL’s marks for the marine certification service appear on products that have been evaluated specifically for marine use. Products bearing these marks have been evaluated to UL’s published marine Standards for Safety and other applicable standards and codes. More information can be found at www.ul.com.

NICOR HAZARDOUS LOCATION CERTIFICATION GUIDE

Atmosphere Groups			
Substance	Hazard Class	Division Groups	Zone Groups
Acetylene	Class I Flammable Gases	Group A	IIC
Hydrogen		Group B	IIB + H2
Ethylene		Group C	IIB
Propane		Group D	IIA
Methane		Group D	IIA ²
Combustible Metal Dusts	Class II Combustible Dusts	Group E ¹	IIIC
Combustible Carbonaceous Dusts		Group F	IIIB
Combustible Dusts not in Group E or F (Flour, Grain, Wood, Plastics, Chemicals)		Group G	IIIB
Combustible Fibers and Flyings	Class III Fibers and Flying	N/A	IIIA
Note 1: Group E is applicable to Class II Division 1 only Note 2: Methane is a group IIA Gas for non-mining applications			

Other Useful Standards		
Standard Types	IEC Standards	US & CAN Standards
Area Classification - Gases, Vapors and Mists	IEC 60079-10-1	NFPA 497
Area Classification - Combustible Dusts, Fibers, Flyings	IEC 60079-10-2	NFPA 499
Electrical Equipment Installation	IEC 60079-14	NFPA 70 (NEC®)/CSA C22.1 [CEC®]
Electrical Equipment Inspection and Maintenance	IEC 60079-17	NFPA 70B
Electrical Equipment Repair and Overhaul	IEC 60079-19	-
Material Characteristics for Gas and Vapor Classification	IEC 60079-20-1	NFPA 497
Material Characteristics for Dust Classification	IEC 60079-20-2	NFPA 499
Application of Quality Systems for Equipment Manufacture	ISO/IEC 80079-34	-
Quality Management Systems	ISO 9001	ISO 9001

Temperature Classification ¹		
Max. Surface Temperature	NEC® 500 / CEC®	NEC® 505 / IEC - Group II
450° C (842° F)	T1	T1
300° C (572° F)	T2	T2
280° C (536° F)	T2A	
260° C (500° F)	T2B	
230° C (446° F)	T2C	
215° C (419° F)	T2D	
200° C (392° F)	T3	T3
180° C (356° F)	T3A	
165° C (329° F)	T3B	
160° C (320° F)	T3C	
135° C (275° F)	T4	T4
120° C (248° F)	T4A	
100° C (212° F)	T5	T5
85° C (185° F)	T6	T6
Note 1: For Group 1 applications (ATEX and IECEx only), electrical apparatus has fixed temperature limits of 150°C (where layers of coal dust can form) and 450°C (where coal dust is not expected to form a layer).		

Classification of Divisions and Zones			
Hazard Level	Division Scheme	Zone Scheme Gas/Dust	Type of Explosive Atmosphere
Continuous Hazard	Division 1	Zone 0 / Zone 20	Continually present
Intermittent Hazard		Zone 1 / Zone 21	Likely to occur during normal operations
Hazard Under Abnormal Conditions	Division 2	Zone 2 / Zone 22	Not likely to occur during normal operations, but may occur for short periods

ERES - XPR

Hazardous Location LED Area Light

The Eres Hazardous Location LED Area Light is designed for installations where moisture, dirt, dust, corrosion and vibration may be present, or NEMA 3 and 4X areas where wind, water, snow or high ambient temperature can be expected. For use in locations made hazardous by the presence of flammable vapors or gases or combustible dusts as defined by the NEC, Eres fixtures are available in 45W and 65W in class C1D2. The Eres is ideal for retrofit of existing HPS/MH and offers higher efficacy for increased energy savings, lower maintenance costs and shorter paybacks.

Certifications: UL 844 & CSA22.2; Class I Division 2 Group A, B, C, D; Class II Division I Group E, F, G; Class II Division 2 Group F and G; Class III; UL1598A Marine

Housing: Copper-free, die-cast aluminum

CCT: 4000K, 5000K

Input Voltage: 100-240/277 VAC

Surge Protection: Philips SP1 10kA surge protector

Operating temperature: -40° to 131°F (-40°C to 55°C)

Installation: Easy installation with seven available mounting options:
Ceiling, Wall/Mounting (25° or 90°), Stanchion Mount (25° or 90°), Adjustable Bracket, Pendant

Access Ports: Four at 3/4" NPT (only available on ceiling and wall mount attachments)

Finish: Gray polyester powder coat

FCC: Meets FCC Part 15, Subpart B, Class A standards for conducted and radiated emissions

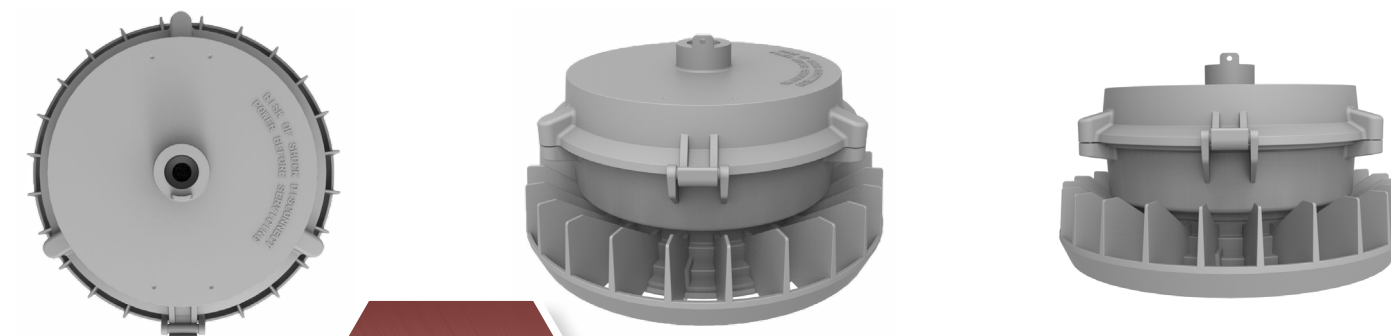
CCT			Lm/W
4000K	6426Lm	45W	151.9
5000K	6750Lm		159.6
4000K	9416Lm	65W	144.6
5000K	9891Lm		151.9



Multi-Mount (shown with ceiling mount attachment)



Pendant Mount

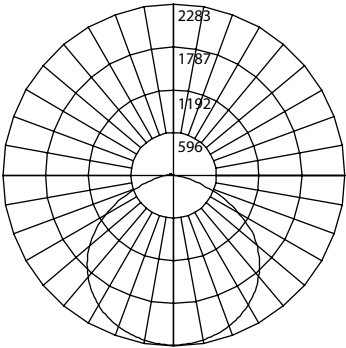


Eres | Hazardous Location LED Area Light

Photometric Data - Class: B (C1D2)

XPR 45W 5000K

Input Voltage (VAC)	120
System Level Power (W)	42.3
120V Current (A)	0.353
277V Current (A)	0.153
Delivered Lumens (Lm)	6750
System Efficacy (Lm/W)	159.6
Correlated Color Temp (K)	5097
Color Rendering Index (CRI)	81
Power Factor	>0.95
THD	<20%
Beam Angle	114.5°
Spacing Criteria	1.32



Intensity Summary
(Candle Power)

Angle	Mean CP
0	2403
5	2396
15	2334
25	2208
35	2009
45	1721
55	1324
65	801
75	261
85	15
90	2

Cone of Light Tabulation

Mounted height (Feet)	Footcandles Beam Center	Diameter (Feet)
8	37.6	10.5
10	24.0	13.1
12	16.7	15.8
14	12.2	18.4
16	9.4	21.0
18	7.4	23.8
20	6.1	26.0

Zonal Lumen Summary

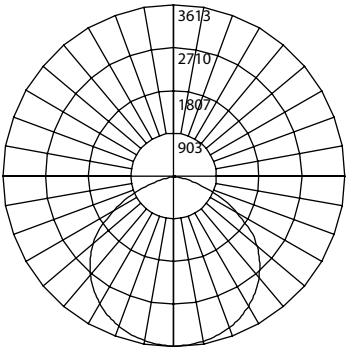
Zone	Lumens	% of Luminaire
0-30	1904	28.2%
0-40	3159	46.8%
0-60	5651	83.7%
0-90	6737	99.8%
90-180	13	0.2%
0-180	6750	100.0%

CCT Data Multiplier

XPR1B045U40GR	0.952
---------------	-------

XPR 65W 5000K

Input Voltage (VAC)	120
System Level Power (W)	65.1
120V Current (A)	0.543
277V Current (A)	0.235
Delivered Lumens (Lm)	9891
System Efficacy (Lm/W)	151.9
Correlated Color Temp (K)	5103
Color Rendering Index (CRI)	81
Power Factor	>0.95
THD	<20%
Beam Angle	114.2°
Spacing Criteria	1.32



Intensity Summary
(Candle Power)

Angle	Mean CP
0	3523
5	3514
15	3423
25	3238
35	2942
45	2521
55	1934
65	1153
75	376
85	24
90	3

Cone of Light Tabulation

Mounted height (Feet)	Footcandles Beam Center	Diameter (Feet)
8	55.0	10.5
10	35.2	13.1
12	24.5	15.7
14	18.0	18.3
16	13.8	20.9
18	10.8	23.5
20	8.8	26.0

Zonal Lumen Summary

Zone	Lumens	% of Luminaire
0-30	2794	28.2%
0-40	4633	46.8%
0-60	8284	83.8%
0-90	9865	99.7%
90-180	26	0.3%
0-180	9891	100.0%

CCT Data Multiplier

XPR1B065U40GR	0.952
---------------	-------

Fixture tested per LM-79-08. Photometric data is of the performance of a representative fixture. Results may vary in the field.

Performance Data			
Model Number	Lumens	Watts	Lumens/Watt
XPR1B045U40GR	6426	42.3	151.9
XPR1B045U50GR	6750	42.3	159.6
XPR1B065U40GR	9416	65.1	144.6
XPR1B065U50GR	9891	65.1	151.9

Ordering Information								
Series	Version	Class	Wattage	Voltage	CCTs	Finish	Mounting	Lens
XPR	1 (Version 1)	B (C1D2)	045 (45W)	U (100-240/277VAC)	40 (4000 K)	GR (gray)	M (Multi-Mount)*	___ (Clear)
			065 (65W)					D (Diffused)**

*Multi-mount required for all mounting options except pendant and U-bracket
**Special order. Consult factory for availability.

Accessories - Pendant and Safety	
Trunnion Mount	XPR1BRACKET
3' Standard Safety Cable	XP1SAFETYCABLE-3
Wire Guard	XPR1WG
Glass Drop Lens	XPR1BDROPLENS
Wire Guard for Drop Lens	XPR1WGDROPLENS

Accessories - Mounting Options	
Ceiling Mount Junction Box	XPR1JBOX
25° Stanchion (1.25")	XPR1STANCHION25125
25° Stanchion (1.50")	XPR1STANCHION25150
90° Stanchion (1.25")	XPR1STANCHION90125
90° Stanchion (1.50")	XPR1STANCHION90150
25° Wall Mount	XPR1WALLMOUNT25
90° Wall Mount	XPR1WALLMOUNT90

Eres | Hazardous Location LED Area Light

Dimensions

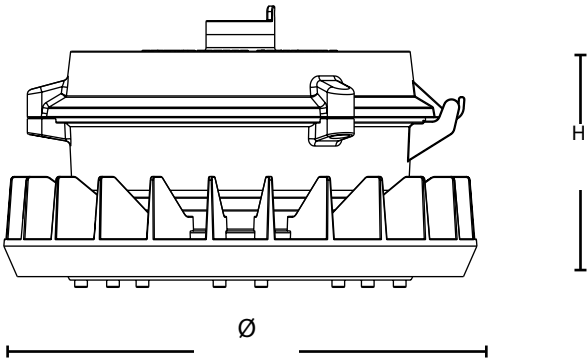
45/65W

Fixture Diameter (Ø)

10.2 in (259mm)

Fixture Height (H)

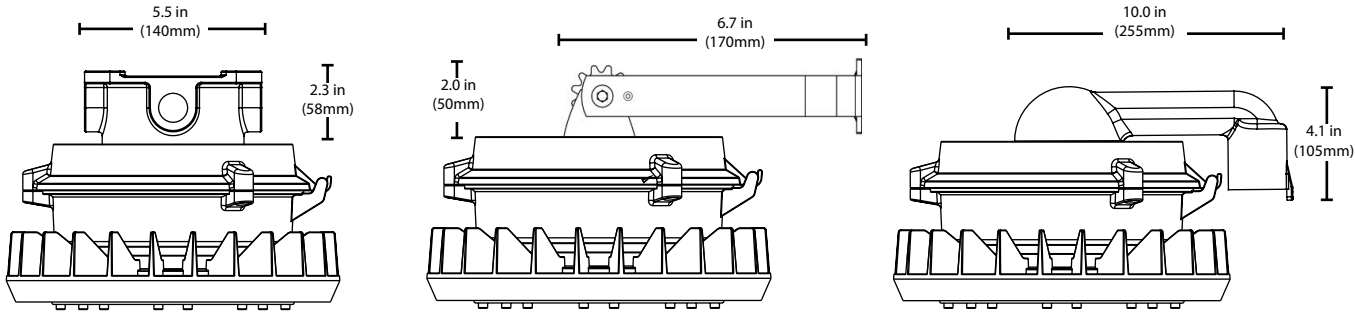
4.875 in (124mm)



Ceiling Mounting (JBox)

U Bracket Mounting

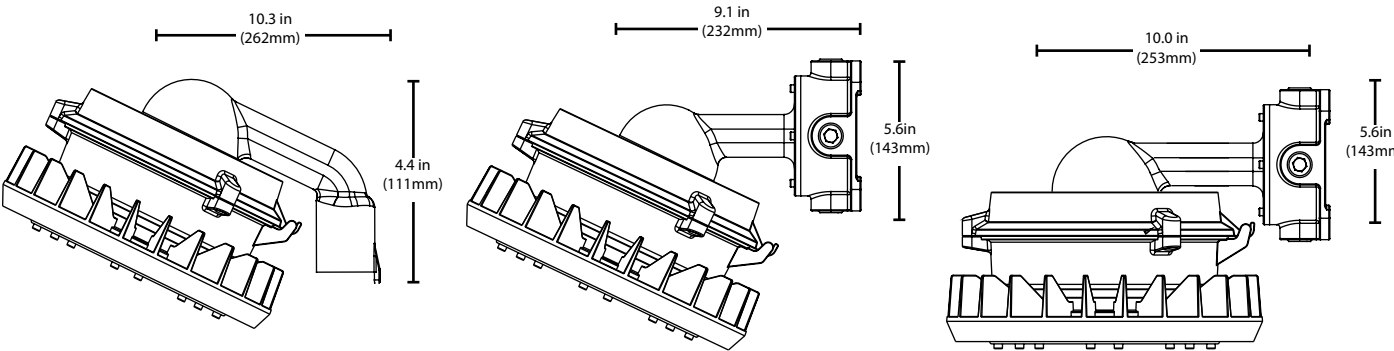
Stanchion 90° Mounting



Stanchion 25° Mounting

Wall 25° Mounting

Wall 90° Mounting



Mounting Options	
Ceiling Mount Junction Box	XPR1JBOX
U-Bracket	XPR1BRACKET
25° Wall Mount	XPR1WALLMOUNT25
90° Wall Mount	XPR1WALLMOUNT90
25° Stanchion (1.25")	XPR1STANCHION25125
25° Stanchion (1.50")	XPR1STANCHION25150
90° Stanchion (1.25")	XPR1STANCHION90125
90° Stanchion (1.50")	XPR1STANCHION90150

PROTEUS - XPL

Hazardous Location LED Linear Luminaire

The Proteus Hazardous Location LED Luminaire is designed for installations where moisture, dirt, corrosion and vibration may be present. For use in locations made hazardous by the presence of flammable vapors or gases as defined by the NEC, Proteus fixtures are available in class C1D2 in 40W with a two foot length or in 80W with a four foot length. Proteus Series is ideal for retrofit of existing HPS/MH & FL and offers higher efficacy for increased energy savings, lower maintenance costs and shorter paybacks.

Certifications: UL 844 & CSA22.2; Class I Division 2 Group A, B, C, D; UL1598A Marine (Salt Water), Wet Location; UL8750LED Safety; IECEx Ex nR II C T6 Gc; CSA C22.2 No. 137-M1981

Housing: Copper-free, die-cast aluminum

CCT: 4000K, 5000K

Input Voltage: 100-240/277 VAC

Surge Protection: Philips SP1 10kA surge protector





Operating temperature: -40° to 122°F (-40°C to 50°C)

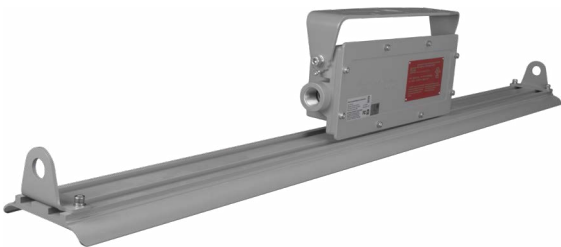
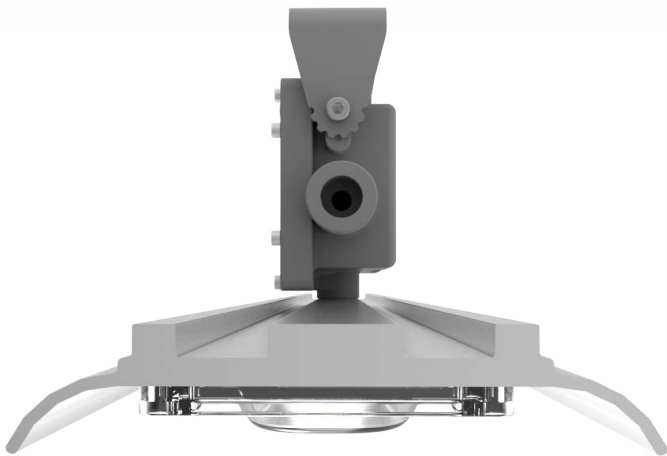
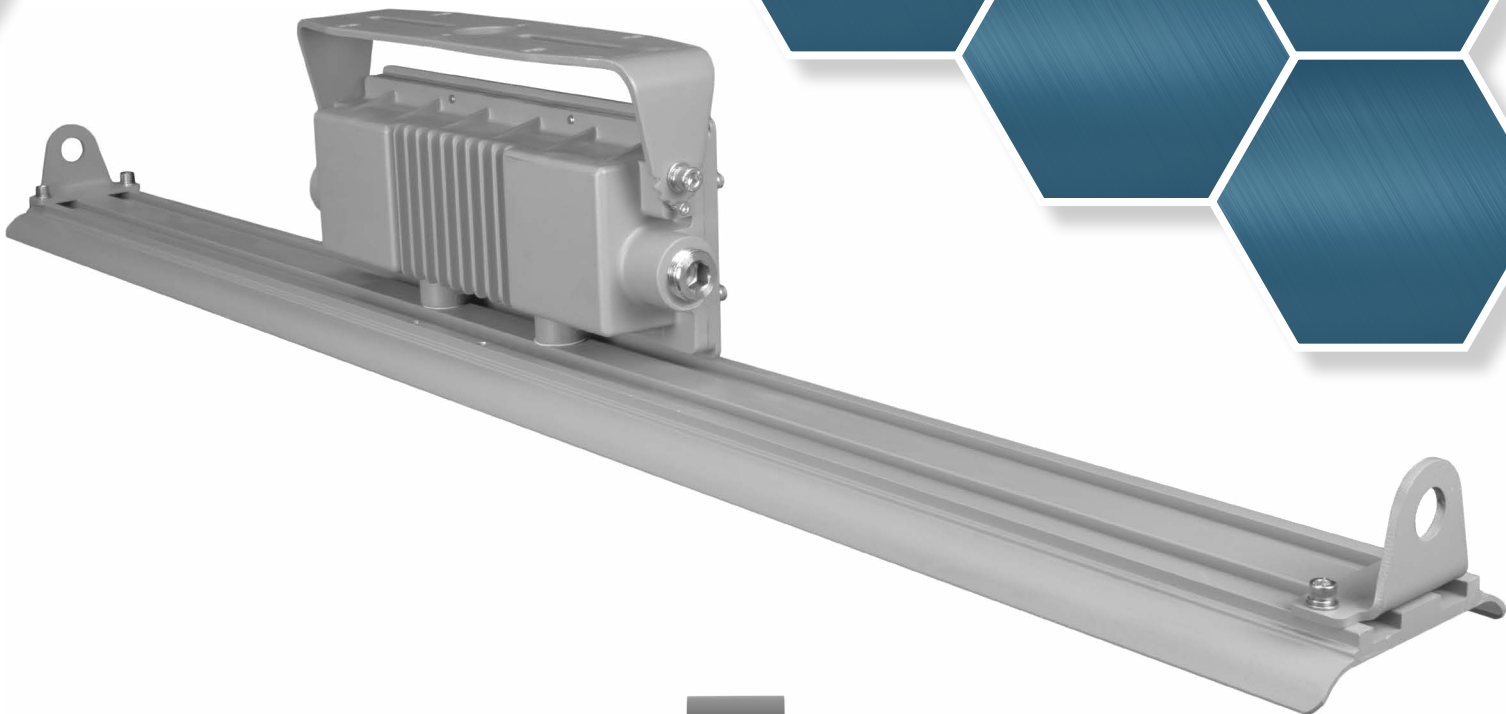
Installation: Easy installation with three mounting options: Ceiling, Wall/Stanchion, and Hanging Chain. Included mounting bracket is drilled for legacy bolt patterns

Access Ports: Two at 3/4" NPT

Finish: Gray polyester powder coat

FCC: Meets FCC Part 15, Subpart B, Class A standards for conducted and radiated emissions

			
4000K	5216Lm	40W	131.2
5000K	5480Lm		134.1
4000K	10433Lm	80W	131.6
5000K	10960Lm		138.3



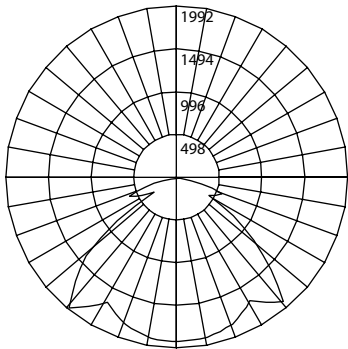
Some images shown with optional chain mounting brackets.

Proteus | Hazardous Location LED Linear Luminaire

Photometric Data - Class: B (C1D2)

XPL 40W 5000K

Input Voltage (VAC)	120
System Level Power (W)	40.9
120V Current (A)	0.341
277V Current (A)	0.148
Delivered Lumens (Lm)	5480
System Efficacy (Lm/W)	134.1
Correlated Color Temp (K)	5053
Color Rendering Index (CRI)	81
Power Factor	>0.95
THD	<20%
Beam Angle	105.9°
Spacing Criteria	1.46



Intensity Summary (Candle Power)		
Angle	Along	Across
0	1915	1915
5	1906	1914
15	1860	1872
25	1743	1771
35	1779	1602
45	1519	1396
55	775	1039
65	472	698
75	276	319
85	0	29
90	0	5

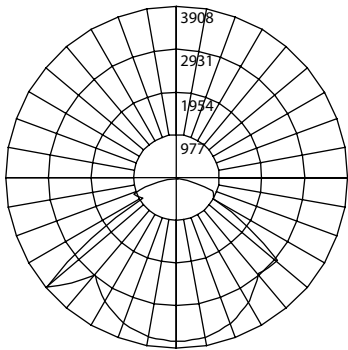
CCT Data Multiplier	
XPL1B040U40GR	0.952

Cone of Light Tabulation		
Mounted height (Feet)	Footcandles Beam Center	Diameter (Feet)
8	29.9	10.1
10	19.1	12.7
12	13.3	15.2
14	9.8	17.7
16	7.5	20.3
18	5.9	23.0
20	4.8	25.0

Zonal Lumen Summary		
Zone	Lumens	% of Luminaire
0-30	1514	27.6%
0-40	2543	46.4%
0-60	4586	83.7%
0-90	5480	100.0%
90-180	0	0.0%
0-180	5480	100.0%

XPL 80W 5000K

Input Voltage (VAC)	120
System Level Power (W)	79.3
120V Current (A)	0.661
277V Current (A)	0.286
Delivered Lumens (Lm)	10960
System Efficacy (Lm/W)	138.3
Correlated Color Temp (K)	5047
Color Rendering Index (CRI)	81
Power Factor	>0.95
THD	<20%
Beam Angle	111.5°
Spacing Criteria	1.30



Intensity Summary (Candle Power)		
Angle	Along	Across
0	3807	3807
5	385	3799
15	3679	3702
25	3443	3485
35	3096	3146
45	2944	2691
55	1968	2096
65	905	1266
75	444	528
85	0	35
90	0	7

CCT Data Multiplier	
XPL1B080U40GR	0.952

Cone of Light Tabulation		
Mounted height (Feet)	Footcandles Beam Center	Diameter (Feet)
8	59.5	10.3
10	38.0	12.9
12	26.5	13.4
14	19.4	18.1
16	14.9	20.5
18	11.8	23.2
20	9.6	25.8

Zonal Lumen Summary		
Zone	Lumens	% of Luminaire
0-30	2998	27.4%
0-40	4951	45.2%
0-60	9134	83.3%
0-90	10960	100.0%
90-180	0	0.0%
0-180	10960	100.0%

Fixture tested per LM-79-08. Photometric data is of the performance of a representative fixture. Results may vary in the field.

Performance Data			
Model Number	Lumens	Watts	Lumens/Watt
XPL1B040U40GR	5216	40.9	131.2
XPL1B040U50GR	5480	40.9	134.1
XPL1B080U40GR	10433	79.3	131.6
XPL1B080U50GR	10960	79.3	138.3

Proteus | Hazardous Location LED Linear Luminaire

Ordering Information

Series	Version	Class/DIV	Wattage	Voltage	CCTs	Finish	Beam Angle	Lens	Emergency
XPL	1 (Version 1)	B (C1D2)	040 (40W)	U (100-240/277VAC)	40 (4000 K)	GR (Gray)	__ (120°)	__ (Clear)	__ (None)
			080 (80W)	H (347-480V)*	50 (5000 K)		06 (60°)*	D (Diffused)*	EM (Emergency*)
							T2 (Type II)*		

*Special order. Consult factory for availability.

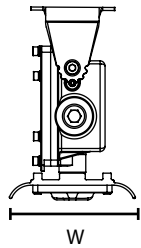
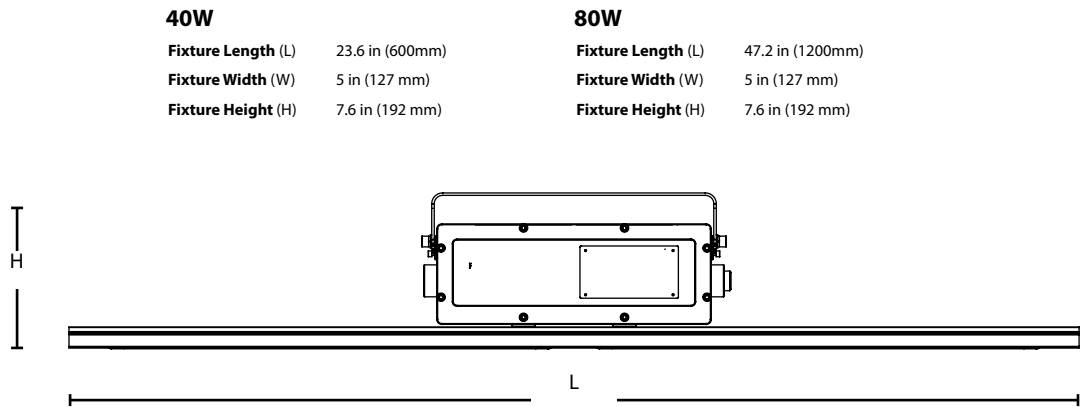
Accessories

C1D1 Heavy Duty Dual Point Retention Kit	XPL1ARETENTIONKIT
C1D1 Drill Rig Kit	XPL1ARIGKIT
Trunnion Mount Bracket	XPL1BRACKET
C1D2 Standard Single Point Retention Kit	XPL1BRETENTIONKIT
C1D2 Heavy Duty Drill Rig Kit	XPL1BRIGKIT-HD
C1D2 Standard Drill Rig Kit	XPL1BRIGKIT-STD
Pipe Mount Kit (2.0" Diameter)	XPL1PIPEMOUNT20
Retention Bracket	XPL1RETENTIONMOUNT
Retention Bracket, 2-Pack	XPL1RETENTIONMOUNT2P

Accessories - Safety

3' Standard Safety Cable	XP1SAFETYCABLE-3
3' Heavy Duty DS Safety Cable	XP1DSCABLE-3

Dimensions



TITAN - XPO

Hazardous Location LED Flood Light

The Titan LED Luminaire is designed for installations where moisture, dirt, dust, corrosion and vibration may be present, or NEMA 3 and 4X areas where wind, water, snow or high ambient temperature can be expected. For use in locations made hazardous by the presence of flammable vapors or gases or combustible dusts as defined by the NEC and IEC, Titan fixtures are available in 80W, 100W, and 150W in both C1D1 and C1D2 classes. The Titan is ideal for retrofit of existing HPS/MH and offers higher efficacy for increased energy savings, lower maintenance costs and shorter paybacks.

Certifications: UL 844 & CSA22.2; Class I Division 1 Group C, D; Class I Division 2 Group A, B, C, D; Class II Division 2 Group F, G; Class III; UL1598A Marine; IECEx Ex d IIB T6 Gb/ Ex tb IIIC T85°C Db

Housing: Copper-free, die-cast aluminum

CCT: 4000K, 5000K

Input Voltage: 100-240/277 VAC

Surge Protection: Philips SP1 10kA surge protector

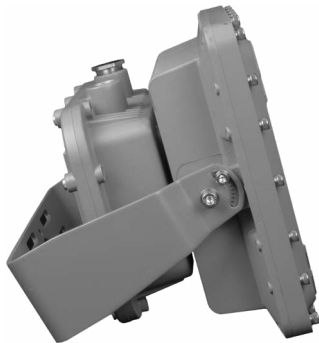
Operating temperature: -40° to 140°F (-40°C to 60°C)





Installation: Easy installation with three available mounting options: Ceiling, Wall, and Floor

Access Ports: Two at 3/4" NPT

Finish: Gray polyester powder coat

FCC: Meets FCC Part 15, Subpart B, Class A standards for conducted and radiated emissions



			
4000K	9900Lm	80W	134.5
5000K	10400Lm		141.3
4000K	12376Lm	100W	126.8
5000K	13000Lm		133.2
4000K	18564Lm	150W	133.0
5000K	19500Lm		139.7

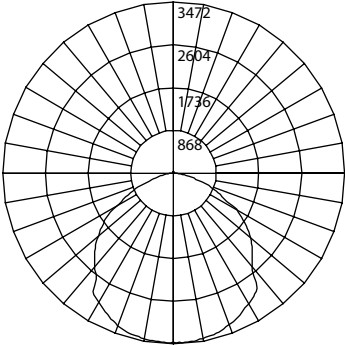


Titan | Hazardous Location LED Flood Light

Photometric Data - Class: A (C1D1) & Class: B (C1D2)

XPQ 80W 5000K

Input Voltage (VAC)	120
System Level Power (W)	73.6
120V Current (A)	0.613
277V Current (A)	0.266
Delivered Lumens (Lm)	10400
System Efficacy (Lm/W)	141.3
Correlated Color Temp (K)	5023
Color Rendering Index (CRI)	81
Power Factor	>0.95
THD	<20%
Beam Angle	105.8°
Spacing Criteria	1.24



Intensity Summary
(Candle Power)

Angle	Mean CP
0	3898
5	3891
15	3796
25	3578
35	3271
45	2623
55	1891
65	1113
75	385
85	32
90	4

Cone of Light Tabulation

Mounted height (Feet)	Footcandles Beam Center	Diameter (Feet)
8	60.9	10.5
10	38.9	13.1
12	27.0	15.2
14	19.9	18.3
16	15.2	21.0
18	12.0	23.5
20	9.8	26.3

Zonal Lumen Summary

Zone	Lumens	% of Luminaire
0-30	3092	29.7%
0-40	5123	49.3%
0-60	8811	84.7%
0-90	10377	99.8%
90-180	24	0.2%
0-180	10400	100.0%

CCT Data Multiplier

XPQ1A080U40GR	0.952
---------------	-------

XPQ 100W 5000K

Input Voltage (VAC)	120
System Level Power (W)	97.6
120V Current (A)	0.813
277V Current (A)	0.352
Delivered Lumens (Lm)	13000
System Efficacy (Lm/W)	133.2
Correlated Color Temp (K)	5037
Color Rendering Index (CRI)	81
Power Factor	>0.95
THD	<20%
Beam Angle	105.8°
Spacing Criteria	1.24



Intensity Summary
(Candle Power)

Angle	Mean CP
0	4990
5	4978
15	4854
25	4585
35	4046
45	3238
55	2335
65	1362
75	468
85	37
90	2

Cone of Light Tabulation

Mounted height (Feet)	Footcandles Beam Center	Diameter (Feet)
8	78.0	10.4
10	49.9	13.1
12	34.6	15.7
14	25.4	18.3
16	19.5	20.9
18	15.4	23.4
20	12.5	26.2

Zonal Lumen Summary

Zone	Lumens	% of Luminaire
0-30	3954	30.4%
0-40	6483	49.9%
0-60	11055	85.0%
0-90	12978	99.8%
90-180	22	0.2%
0-180	13000	100.0%

CCT Data Multiplier

XPQ1A100U40GR	0.952
---------------	-------

XPQ 150W 5000K

Input Voltage (VAC)	120
System Level Power (W)	139.6
120V Current (A)	1.163
277V Current (A)	0.504
Delivered Lumens (Lm)	19500
System Efficacy (Lm/W)	139.7
Correlated Color Temp (K)	5041
Color Rendering Index (CRI)	81
Power Factor	>0.95
THD	<20%
Beam Angle	107.7°
Spacing Criteria	1.26



Intensity Summary
(Candle Power)

Angle	Mean CP
0	7352
5	7341
15	7171
25	6772
35	6000
45	4889
55	3520
65	2083
75	710
85	52
90	6

Cone of Light Tabulation

Mounted height (Feet)	Footcandles Beam Center	Diameter (Feet)
8	114.9	10.6
10	73.5	13.2
12	51.1	15.8
14	37.5	18.4
16	28.7	21.1
18	22.7	23.7
20	18.4	26.1

Zonal Lumen Summary

Zone	Lumens	% of Luminaire
0-30	5843	30.0%
0-40	9607	49.3%
0-60	16564	84.9%
0-90	19457	99.8%
90-180	43	0.2%
0-180	19500	100.0%

CCT Data Multiplier

XPQ1A150U40GR	0.952
---------------	-------

Fixture tested per LM-79-08. Photometric data is of the performance of a representative fixture. Results may vary in the field.

Titan | Hazardous Location LED Flood Light

Photometric Data - Class: A (C1D1) & Class: B (C1D2)

Performance Data

Model Number	Lumens	Watts	Lumens/Watt
XPQ1A080U40GR	9900	73.6	134.5
XPQ1A080U50GR	10400	73.6	141.3
XPQ1A100U40GR	12376	97.6	126.8
XPQ1A100U50GR	13000	97.6	133.2
XPQ1A150U40GR	18564	139.6	133.0
XPQ1A150U50GR	19500	139.6	139.7

Ordering Information

Series	Version	Class	Wattage	Voltage	CCTs	Finish	Mounting	Beam Angle	Lens
XPQ	1 (Version 1)	A (C1D1)	080 (80W)	U (100-240/277VAC)	40 (4000 K)	GR (gray)	__ (U-Bracket)	__ (120°)	__ (Clear)
		B (C1D2)	100 (100W)	H (347-480V)*	50 (5000 K)		P (Pendant Mount)	25 (25°)*	D (Diffused)*
			150 (150W)					60 (60°)*	

*Special order. Consult factory for availability.

Accessories

Accessories sold separately

Slipfitter, Black

XPQ1SLIPFIT

Slipfitter, Dusty Gray

XPQ1SLIPFITGR

Visor

XPQ1VISOR

Wire Guard

XPQ1WG

Accessories - Safety

3' Heavy Duty DS Safety Cable

XP1DSCABLE-3

Dimensions

80/100/150

Fixture Length (L)

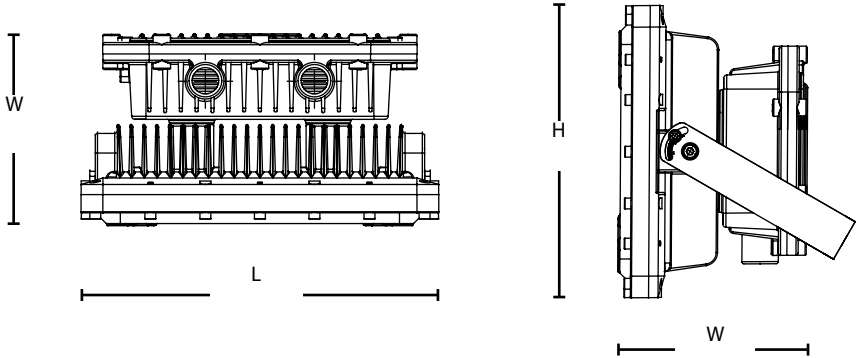
12.9 in (328 mm)

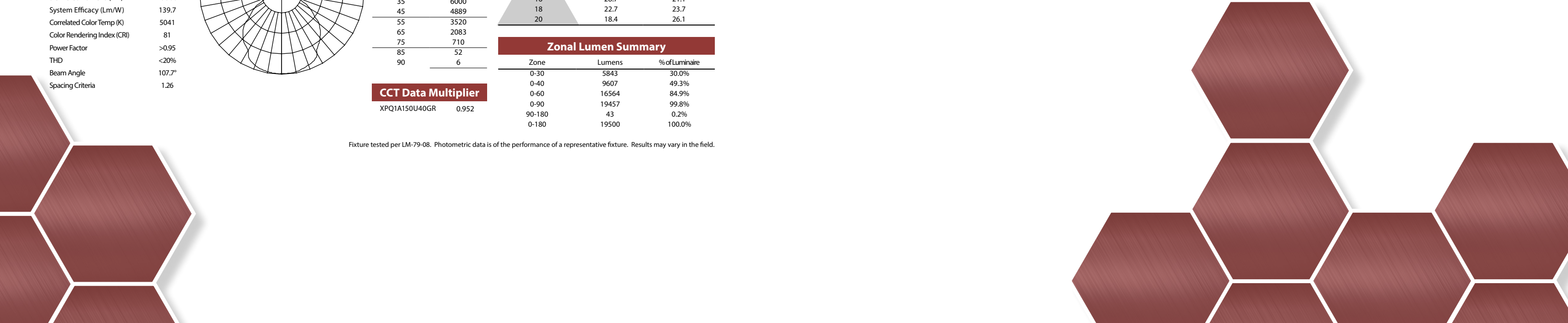
Fixture Width (W)

6.9 in (176 mm)

Fixture Height (H)

10.7 in (271mm)





Warehouse Locations

Albuquerque, NM
Atlanta, GA
Detroit, MI
Folcroft, PA
Houston, TX

Indianapolis, IN
Lombard, IL
Miami, FL
Syracuse, NY
Van Nuys, CA

T 800.821.6283

F 800.892.8393

www.nicorlighting.com

2200 Midtown Pl. NE
Albuquerque, NM 87107 USA



LIT-HAZLOC
20200304

©2020 NICOR® • ALL RIGHTS RESERVED

NICOR®
HAZOC