

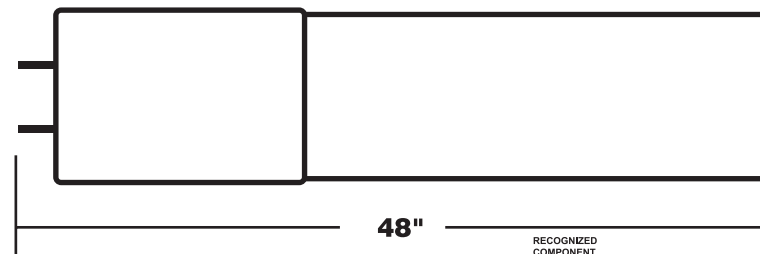
BULBRITE® LED

LED 4' LINEAR T8 DOUBLE INPUT

Replaces 32W Fluorescent Linear T8

Item #: 776016 & 776017

Ordering Code: LED16T8/830/BYP/2 & LED16T8/840/BYP/2



RECOGNIZED COMPONENT



Intertek
4005203
conforms to NSF 270.2
Made in China

These instructions are provided for your safety. It is important that the instructions are read carefully and completely before assembling. Please save these instructions, as you may need them at a later date.

The T8 LED tubes are intended to retrofit Listed surface mounted, type NON-IC or type IC recessed mounted fluorescent luminaires with or without diffuser for maximum four lamps with lamp to lamp distance 5.5 inch minimum; Or retrofit surface mounted Listed fluorescent luminaires without diffuser for maximum six lamps with lamp to lamp distance 2.3 inch minimum.

WARNING: RISK OF ELECTRIC SHOCK. BE SURE THE ELECTRICITY TO THE FIXTURE YOU ARE WORKING ON IS SHUT OFF; EITHER THE FUSE IS REMOVED OR THE CIRCUIT BREAKER IS TURNED OFF. TO PREVENT WIRING DAMAGE OR ABRASION, DO NOT EXPOSE WIRING TO EDGES OF SHEET METAL OR OTHER SHARP OBJECTS. DO NOT ALTER ANY WIRING ENCLOSURE DURING INSTALLATION. THIS LED RETROFIT MUST BE INSTALLED IN ACCORDANCE WITH THE NATIONAL ELECTRICAL CODE (NEC) AND RELEVANT LOCAL CODE. IF NOT QUALIFIED, DO NOT ATTEMPT INSTALLATION. PLEASE CONSULT A LICENSED ELECTRICIAN IF YOU HAVE ANY QUESTIONS. TO REDUCE THE RISK OF FIRE OR ELECTRIC SHOCK, DO NOT INSTALL THIS PRODUCT WHERE THERE IS A RISK OF RAIN OR MOISTURE EXPOSURE. USE IN DRY AND DAMP LOCATION ONLY.

KIT INCLUDES:



1 – LED 4' Linear T8
Retrofit



1 – Label for Field
Application

Before installation, confirm all parts are in good condition. If any parts are damaged, do not attempt to install. Contact an American Lighting Association (ALA) Certified Relationship Specialist at Bulbrite for help with installation or questions about your kit at 800-528-5555 or info@bulbrite.com.

LED 4' LINEAR T8 RETROFIT KIT FOR USE ONLY WITH FLUORESCENT LUMINAIRES.

BEFORE INSTALLATION PLEASE NOTE:

1. Read instructions carefully and completely before installation.
2. Bypassing the ballast is required when installing this product. Do not use in conjunction with any type of ballast or driver. These LED retrofits are intended for use with 100-277V or 120-277Vac. The installer must determine which input at luminaire before installation.
3. Install this kit only in the luminaires that have the construction features and dimensions shown in the photographs and/or drawings and where the input rating of the retrofit kit does not exceed the input rating of the luminaire.
4. For luminaires with starters, the starters must be disconnected from the circuit. DO NOT REMOVE the starter(s) from the luminaire, as it will create an opening in the luminaire.
5. Wires should not be disconnected from lamp holder terminals to make new connections during installation. If new electrical connections are required, cut existing lamp holders leads away from the lamp holder and create the new connections by employing applicable connectors.
6. This lamp is non-dimmable. Not for use with dimmers.
7. Not intended for use with emergency fixtures or emergency exit lights.
8. "This luminaire has been modified and no longer operates fluorescent lamps," shall be marked on the retrofit luminaire where readily visible by the user during normal maintenance including re-lamping. Use label provided for field application.

BULBRITE® LED

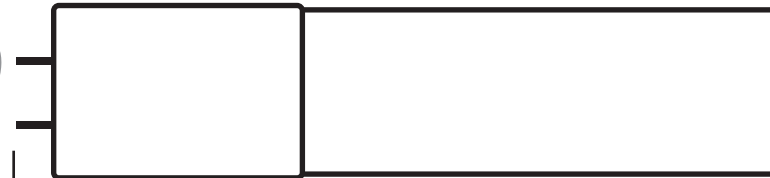
LED 4' LINEAR T8 DOUBLE INPUT

Replaces 32W Fluorescent Linear T8

Item #: 776016 & 776017

Ordering Code: LED16T8/830/BYP/2 & LED16T8/840/BYP/2

Before installation, confirm all parts are in good condition. If any parts are damaged, do not attempt to install. Contact an American Lighting Association (ALA) Certified Relationship Specialist at Bulbrite for help with installation or questions about your kit at 800-528-5555 or info@bulbrite.com.



48"



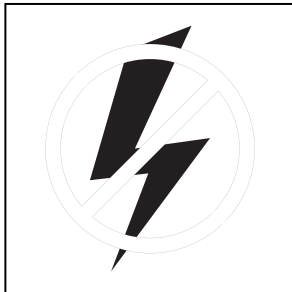
RECOGNIZED COMPONENT



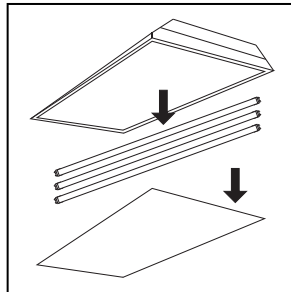
Intertek
4005203
CONFORMS TO NSF STD.3
Made in China

LED 4' LINEAR T8 RETROFIT KIT FOR USE ONLY WITH FLUORESCENT LUMINAIRES.

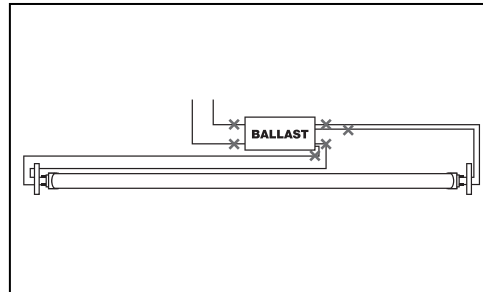
INSTALLATION INSTRUCTIONS:



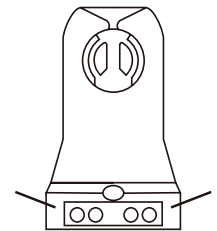
1. Power off all electricity to the luminaire.



2. Remove lens, cover and fluorescent tubes from the luminaire. Identify which end will be the "live end."



3. Cut all wires that connect the ballast. Properly discard of the ballast or cap off the wires. Cut wires connect to lamp holders. Ensure ground wire is firmly connected to ground screw.

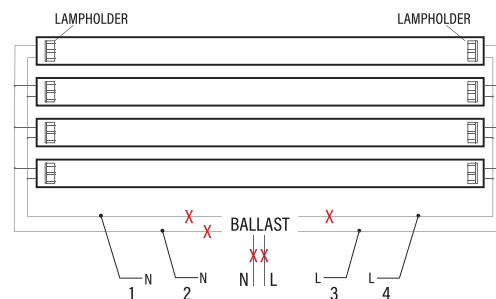
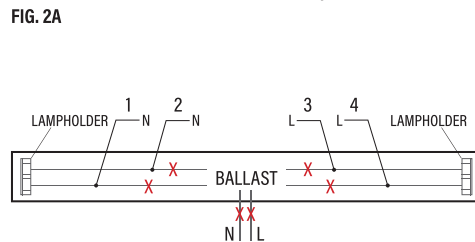


Non-shunted lampholder

4. Identify if your fixture sockets are shunted or non-shunted. If fixture sockets are non shunted.

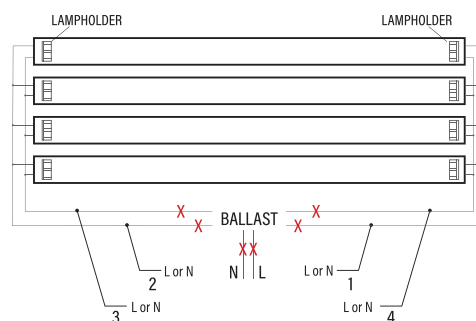
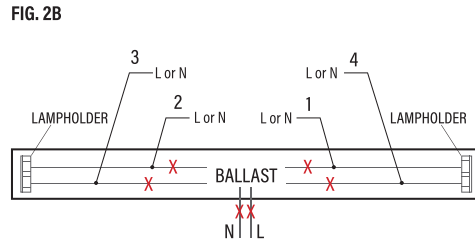
5. If the lampholder is not shunted, go to Step 6. If the lampholder is shunted, connect one lead from each lampholder to branch circuit as follows, "Leads 3 and 4" connected to L; "Leads 1 and 2" connected to N as shown in Fig.2A. Cut as far away from the lampholders to allow for longer lengths of wire at both lampholders. Note: Ballast must be retained in place.

FIG. 2A



6. Connect any two of the leads to "L" and "N" as shown in Fig.2B. Cut as far away from the lampholder to allow for longer lengths of wire at both lampholders. Note: Ballast must be retained in place.

FIG. 2B



8. Installer must mark the luminaire where readily visibly by the user during normal maintenance including re-lamping with "This luminaire has been modified and can no longer operate the originally intended lamp."

9. Install your Bulbrite LED double input bypass T8 models into the fixture. You can install your bulb into the fixture with either end in any end of the fixture as both ends are live.

10. Turn on power source and installation is now complete.