



FHEM10RH

Micro Adjustable LED Round-Head Remote Lamps

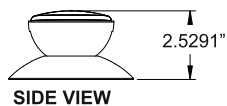
- 12 LED assembly for use in areas requiring remote lighting
- Energy saving LED
- For indoor and outdoor applications
- High impact resistant thermoplastic housing
- Single and double remote lamps
- Each lamp head is used as part of an emergency lighting system
- Compatible with FHEM16, FHEX20, FHEC33 and FHEC35 series^{①②}
- Each lamp head is fully adjustable and glare-free
- Recommended Max Mounting Distance <20ft using 18 gauge wire *

General Specifications

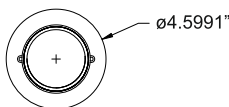
	FHEM10RH13V1	FHEM10RH23V1
Input Power	1.72W	3.40W
Input Voltage	3.6V	3.6V
Number of Heads	1	2
Overall Size	4.59" Dia. x 2.52" H - Single Lamp 6.69" L x 2.52" H x 4.68" W - Double Lamp	
Emergency Operation	90 minutes	
Compliance	UL 924 Listed Damp Location	
Warranty	5 years from the date of manufacture	

Mechanical Data

FHEM10RH13V1
(Single Head)

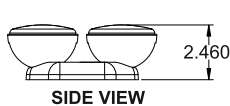


SIDE VIEW

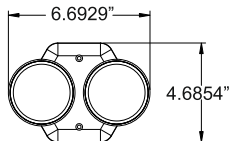


FRONT VIEW

FHEM10RH23V1
(Double Head)



SIDE VIEW



FRONT VIEW

Lamp Data

- FHEM10RH13V1 - 3.6V, 0.92W Round LED Lamp Heads
- FHEM10RH23V1 - 3.6V, 1.84W Round LED Lamp Heads

Part Number Matrix

FH EM 10 RH 1 3V 1

FireHorse

Emergency Luminaire

Model Number

RH=Remote Head

Number of Heads

Voltage

Wattage Per Head

1 = 1 Head
2 = 2 Heads

3V = 3.6Volts

1 = 1.72W

① Compatible Series are UL Listed with Remote Heads

② All remote capable models will run two 1 head units or one 2 head unit.

* If you exceed the recommended wiring distance noticeable lumen loss will occur